

Section 14

Subcontractors

Section 14: Subcontractors

Snip C-channel at the top of the wall if installing electrical after the wall is poured.

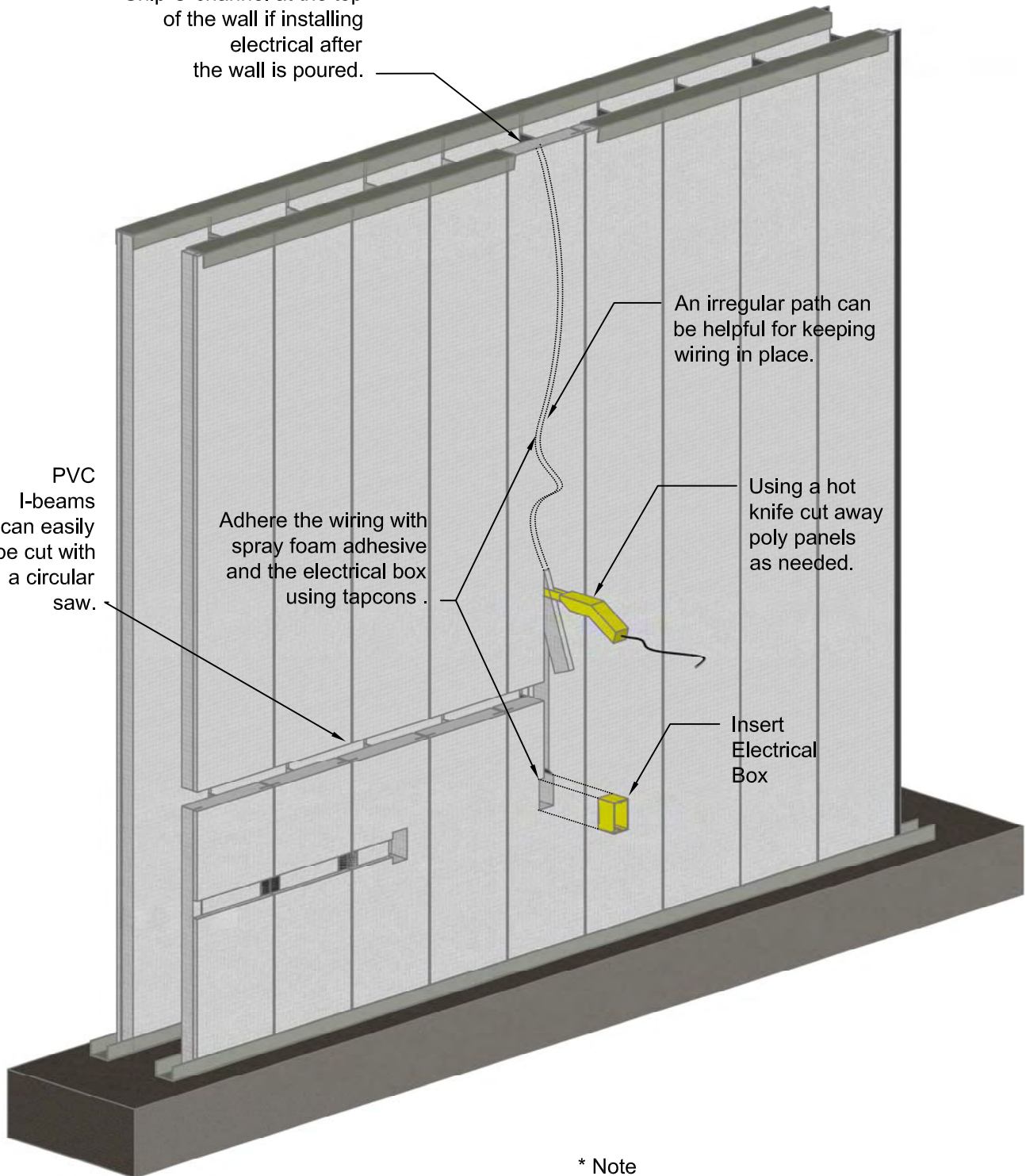
An irregular path can be helpful for keeping wiring in place.

Using a hot knife cut away poly panels as needed.

Adhere the wiring with spray foam adhesive and the electrical box using tapcons.

Insert Electrical Box

PVC I-beams can easily be cut with a circular saw.



* Note

Always check local codes. Electrical can also be imbedded in the poly panels within a conduit.



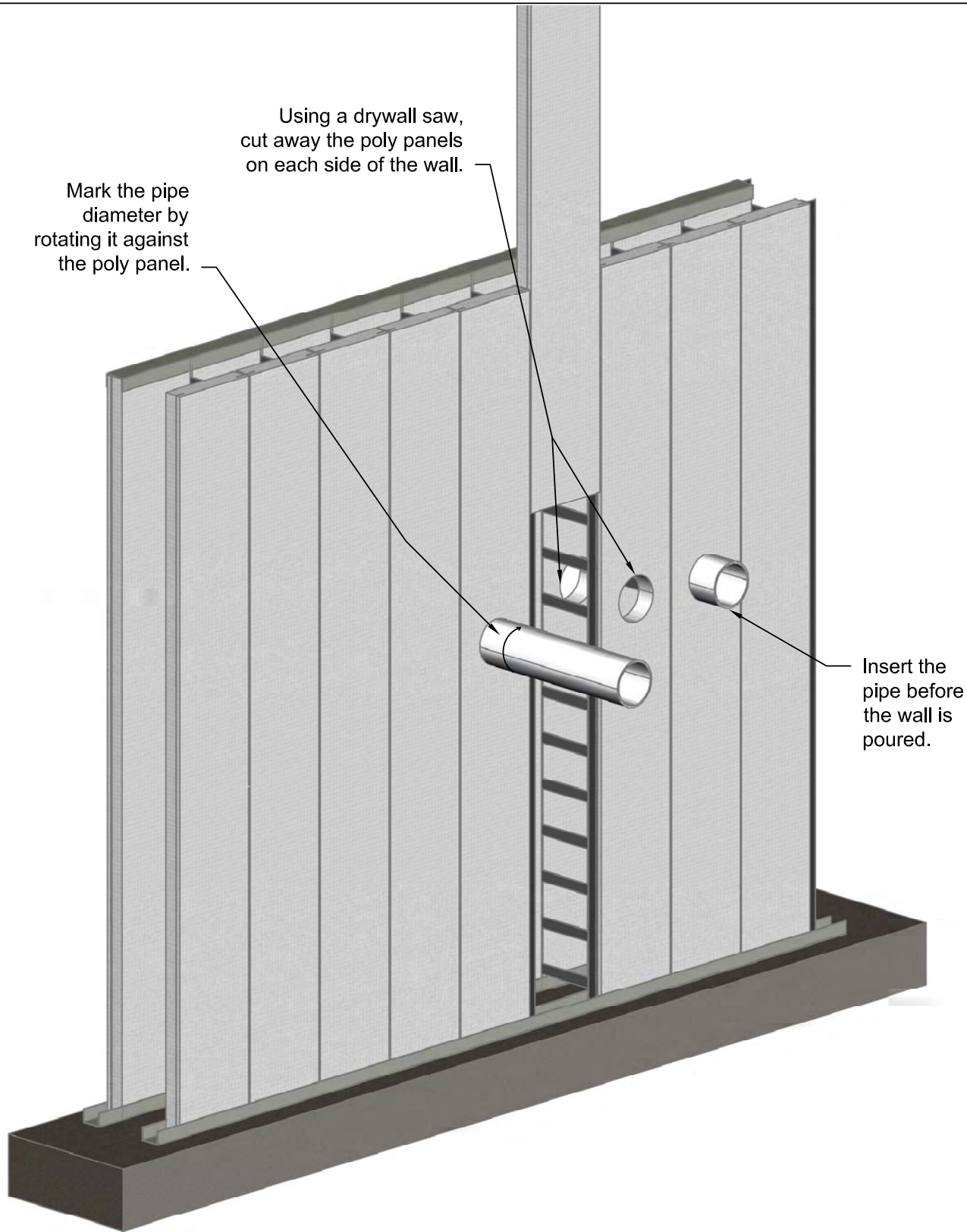
The Vertical ICF

Electrical Installation

TF System®
3030C Holmgren Way
Green Bay, WI 54304 USA
800-360-4634

Revision Date: 7/27/07

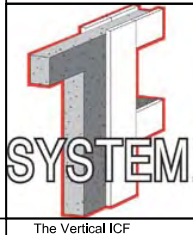
Page Number: 181



Mark the pipe diameter by rotating it against the poly panel.

Using a drywall saw, cut away the poly panels on each side of the wall.

Insert the pipe before the wall is poured.

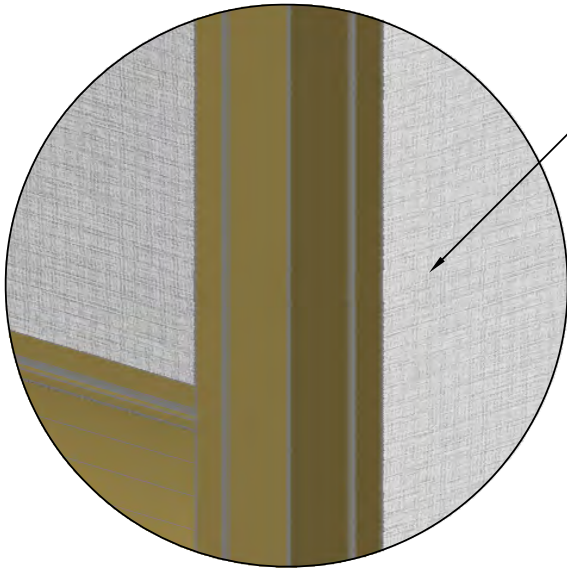


Installing Pipe Protrusions

TF System®
 3030C Holmgren Way
 Green Bay, WI 54304 USA
 800-360-4634

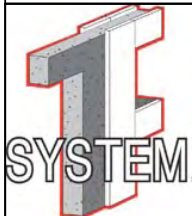
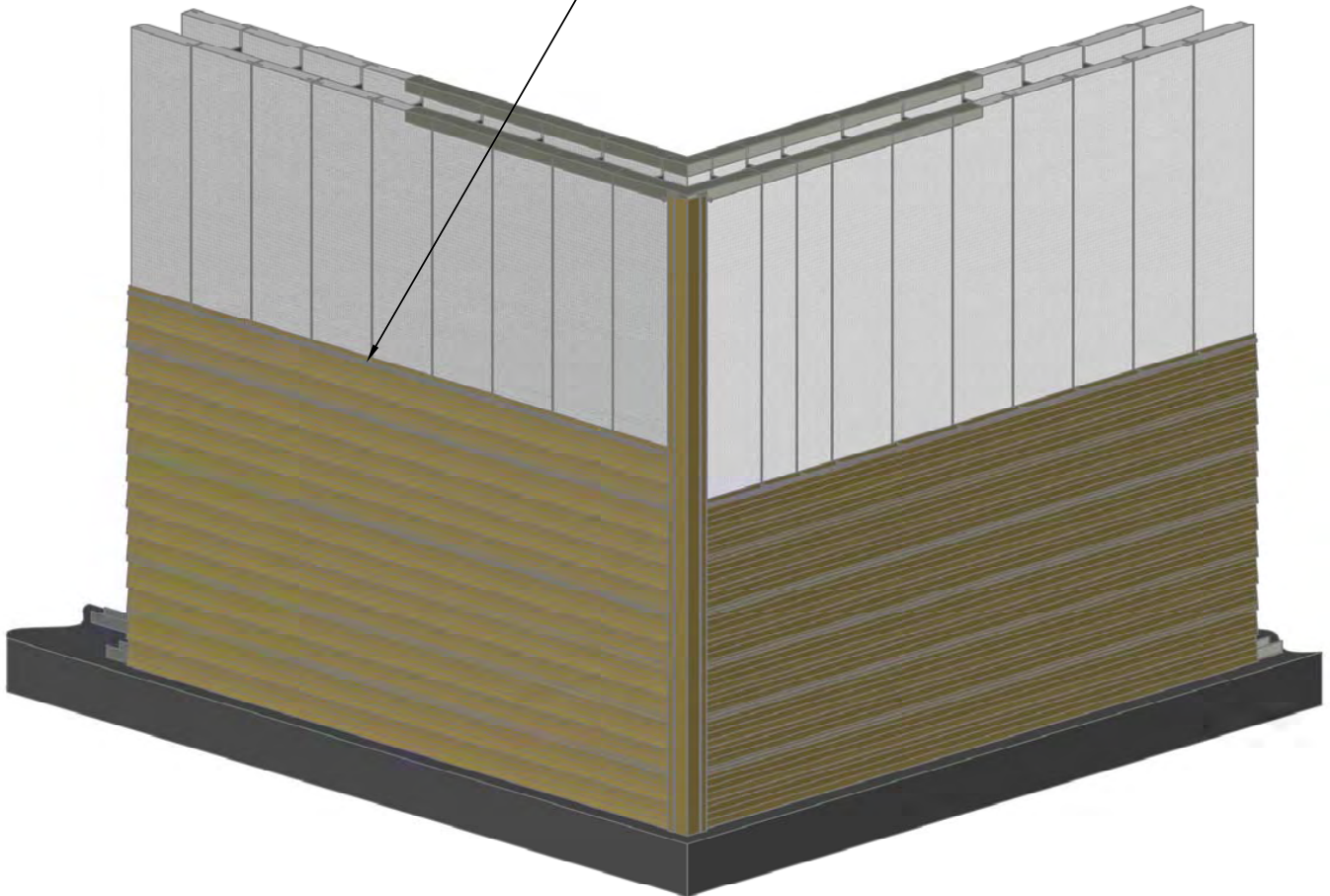
Revision Date: 7/27/07

Page Number: 182



Use the corner attachment bracket or metal strapping to attach the siding and corner post to outside corners.

Attach siding every 1' o.c. to TF System

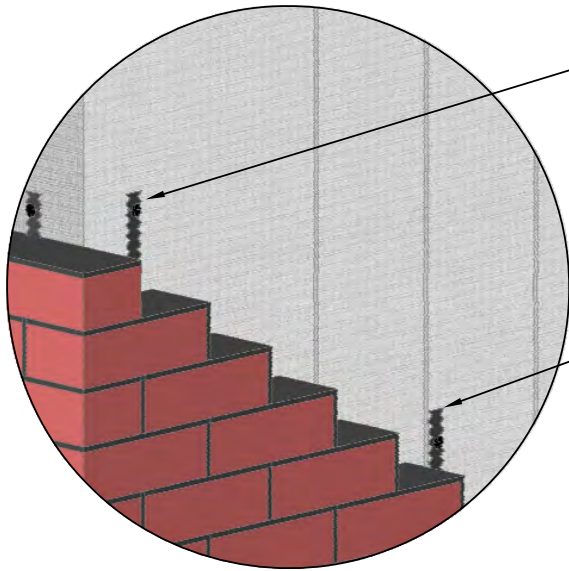


Attaching Siding

TF System®
 3030C Holmgren Way
 Green Bay, WI 54304 USA
 800-360-4634

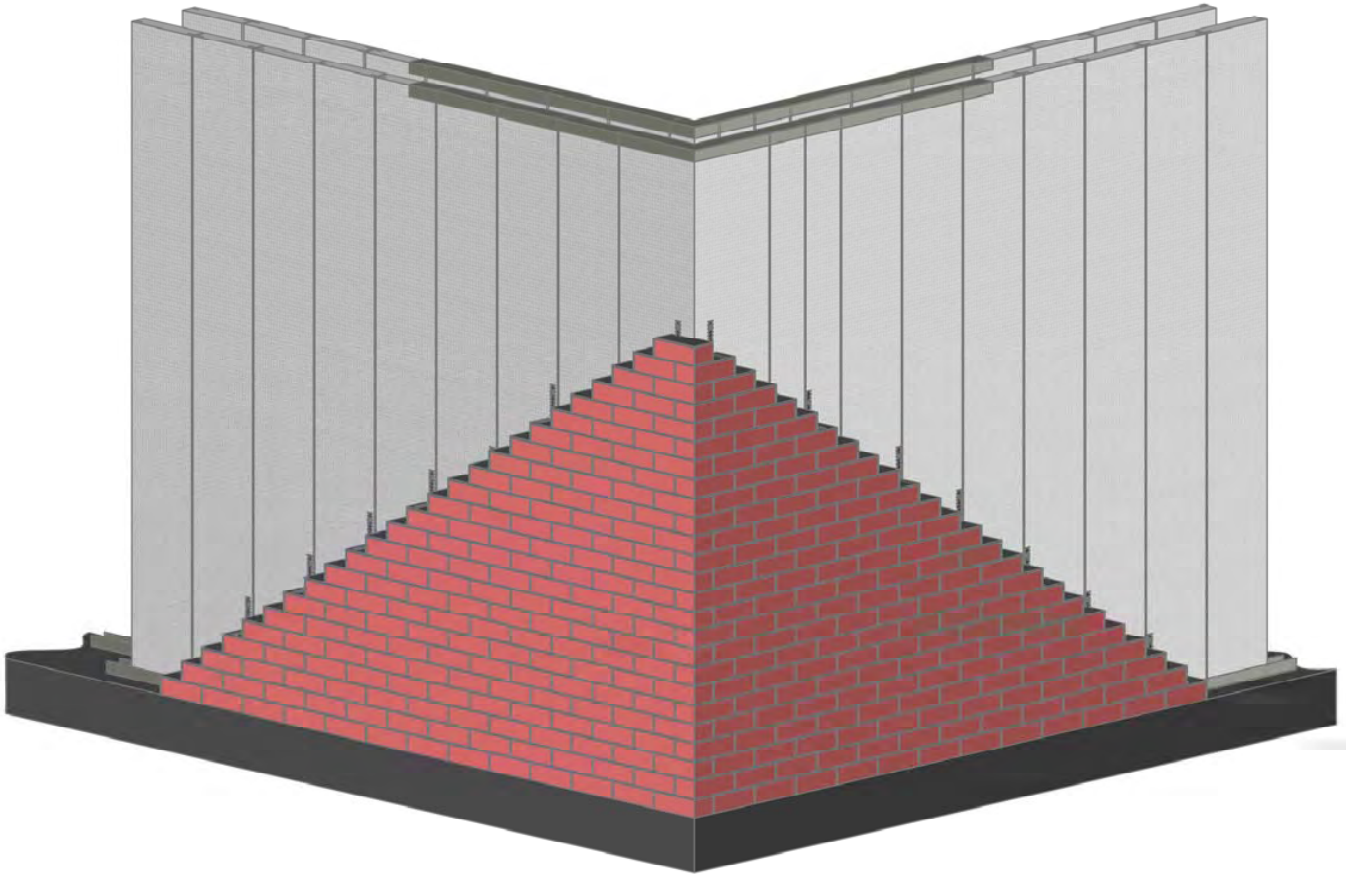
Revision Date: 7/27/07

Page Number: 183



Screw brick ties to the corner attachment bracket.

Brick ties can be screwed directly to TF System's I-beams.

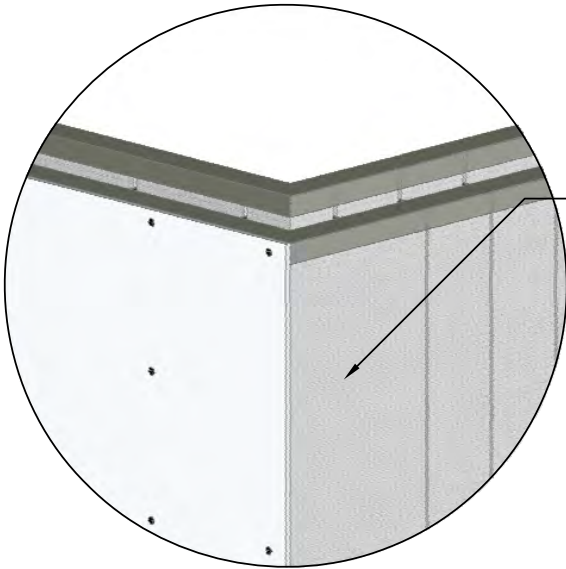


Attaching Brick

TF System®
3030C Holmgren Way
Green Bay, WI 54304 USA
800-360-4634

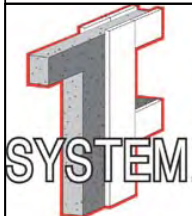
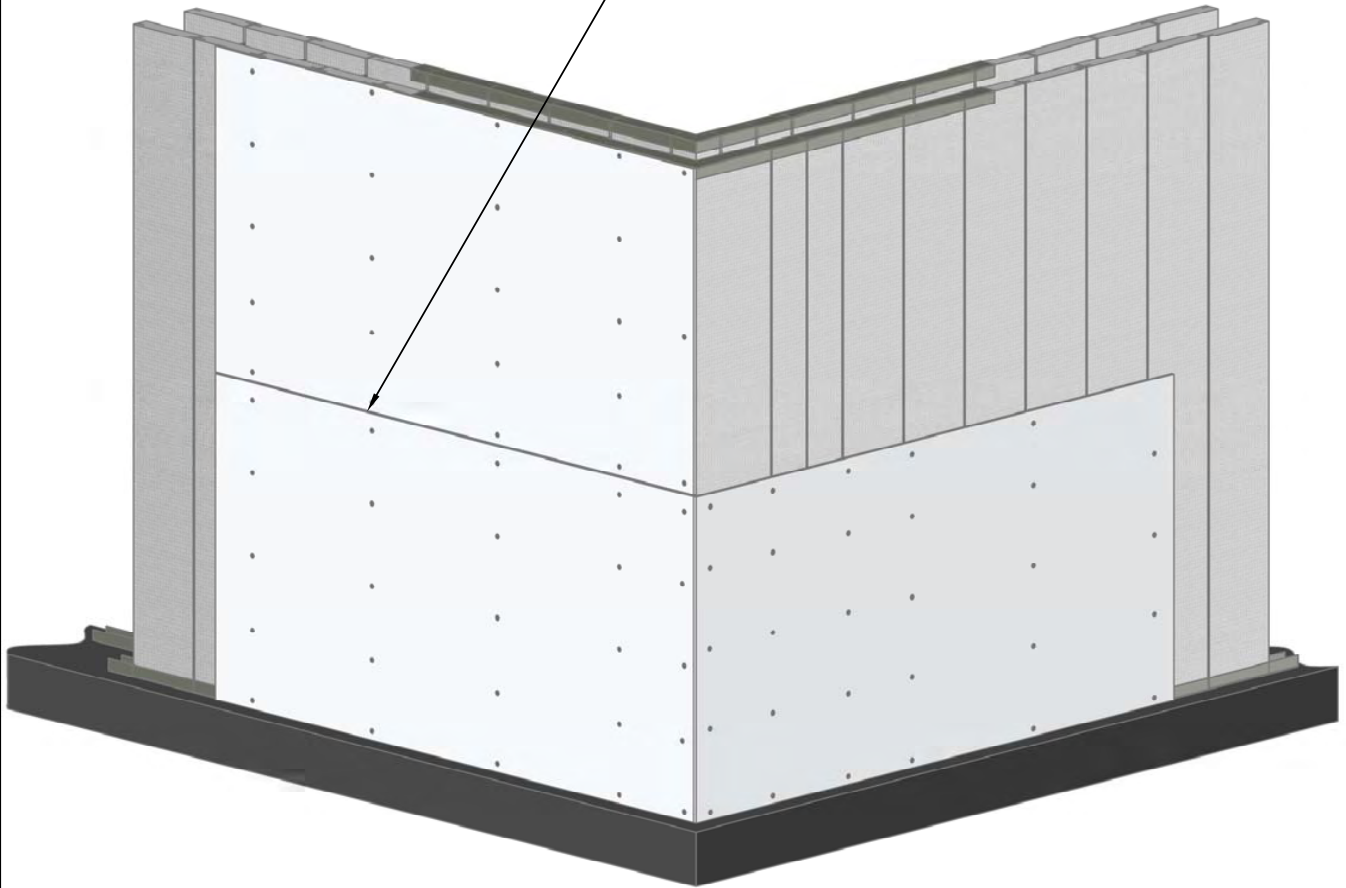
Revision Date: 7/27/07

Page Number: 184



Use the corner attachment bracket or metal strapping to attach drywall.

Attach drywall, according to code, directly to TF System.



The Vertical ICF

Attaching Drywall

TF System®
 3030C Holmgren Way
 Green Bay, WI 54304 USA
 800-360-4634

Revision Date: 7/27/07

Page Number: 185

