

Section 16

Product Shipping Information

The section contains information on how TF System products are shipped. This information is intended to help you understand how you will receive your products and aid you in efficiently unloading materials.

TF System® Product Shipping Information

At TF System®, our product is packaged to take full advantage of the different modes of transportation available in the shipping industry. Whether you are ordering material for an individual project or multiple projects, our logistics team works closely with various carriers to determine the best and most economical way of getting our product to you. TF System® uses a customized pallet system, making sure that the maximum amount of product is packaged per skid to arrive safely at its destination.

The pictures and quantities listed below and on the next pages show you some examples of our standard sizes, quantities and configurations used in our shipping process.

I-Beams

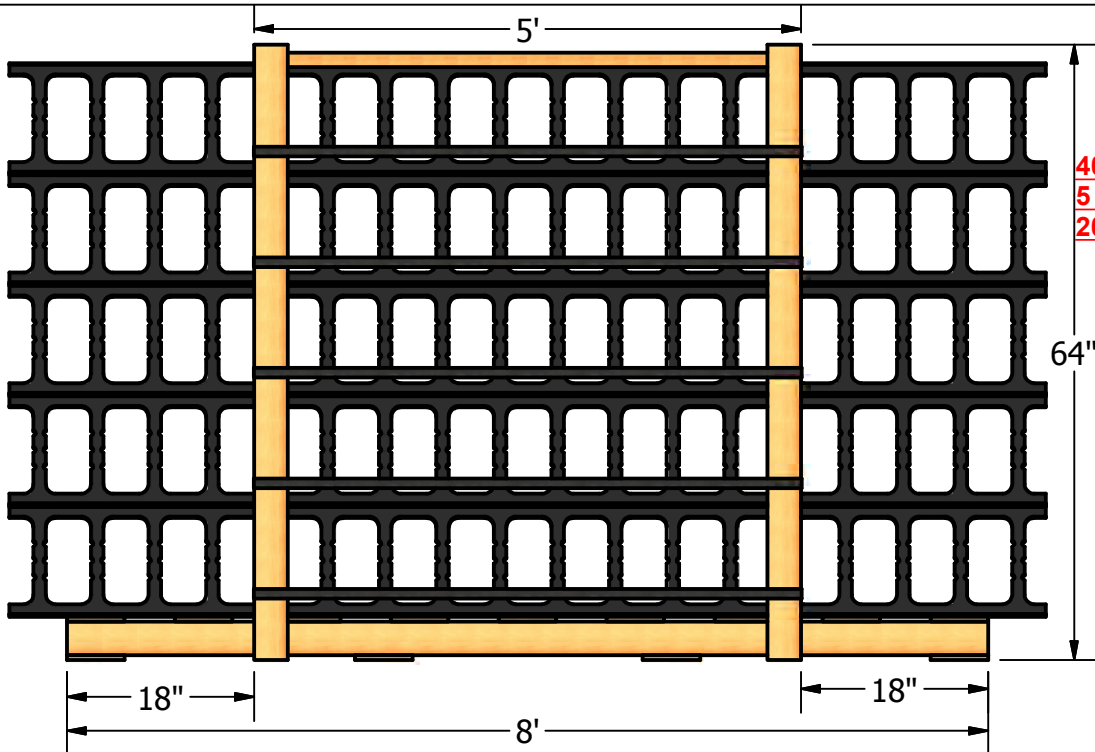
Size (Width)	Skid Quantity
4"	280 Pieces
6"	240 Pieces
8"	200 Pieces
10"	160 Pieces

I-Beam lengths for in-stock material are 4, 8, 9 or 10 feet.

Skid (pallet) information

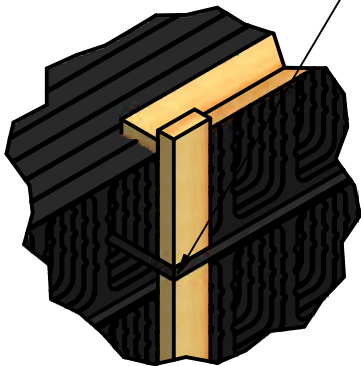
- 40 I-Beams per row
- Width – 46 inches
- Length – Equal to length of I-Beams
- Height – 5 feet
- Weight – 500 lbs to 1500 lbs each





40 Parts per Row
5 Rows High
200 Parts per Pallet

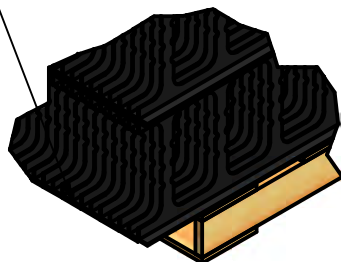
DETAIL B



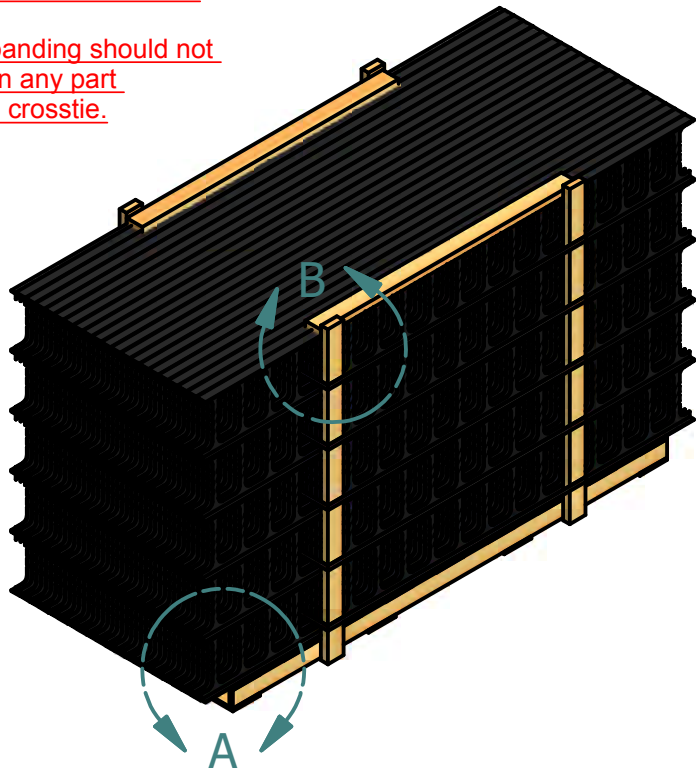
Banding is to be run around the outside of the 2x4s and through the opening between the cross-ties.

The banding should not pull on any part of the cross-tie.

Depending on the length of the studs, there may be an overhang that is equal on both sides of the pallet.



DETAIL A



Typical Palletizing of

9' x 8" Studs on 8' Pallet

TF System ®
 3030C Holmgren Way
 Green Bay, WI 54304 USA
 800-360-4634

Revision Date:

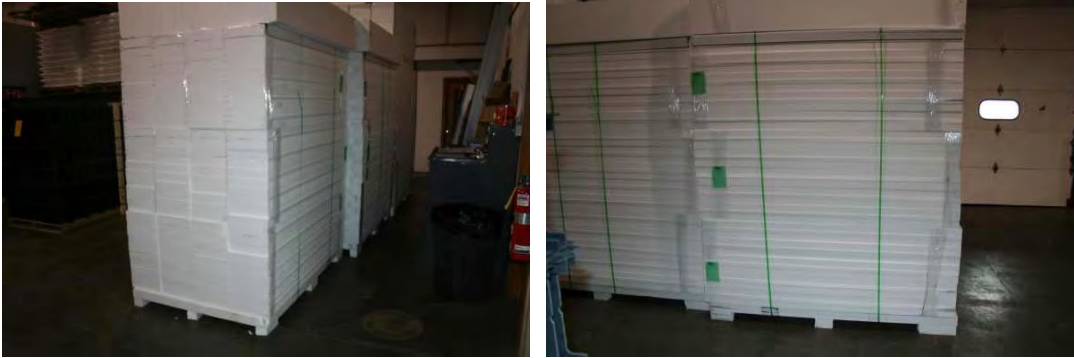
Page Number: 228

Poly Panels

A standard panel is 12 inches wide, in stock lengths would be the same as I-Beam lengths of 4, 8, 9, or 10 foot.

Skid (pallet) information

- Panels bundled in quantities of 10
- Four bundles per row, 3 bundles high
- Width – 48 inches
- Length – Equal to length of Panels
- Height – 6 feet 6 inches
- Weight – 250 lbs



Poly Corners

Corners are packaged in quantities of 2 each which includes both an inside and outside corner piece.

Skid (pallet) information

- Corners bundled in quantities of 2
 - Fifteen bundles per skid
 - Width – 48 inches
 - Length – Equal to length of Corners
 - Height – 6 feet
- Weight – 375 lbs

C-Channel

C-Channels are used as both a starting track for the forms connected to the footing and a cap on the top of the forms to keep them straight.

Skid (pallet) information

- C-Channel is bundled in quantities of 10
- Forty Five bundles per skid (450 pieces)
- Width – 48 inches
- Length – 10 feet
- Height – 3 feet
- Weight – 1,450 lbs

