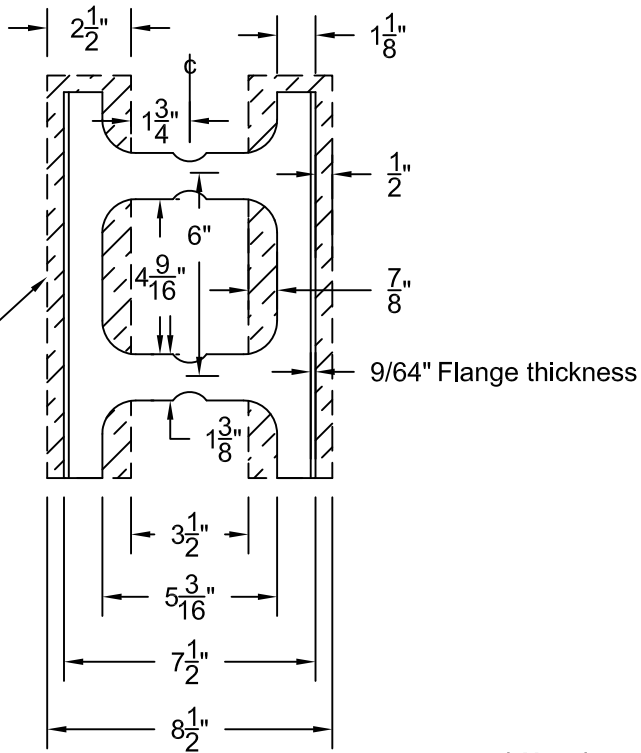


Section 6
Dimensions

**4" PVC Studs
shown in
relationship to
poly panels**

TF 2.5" Poly panel

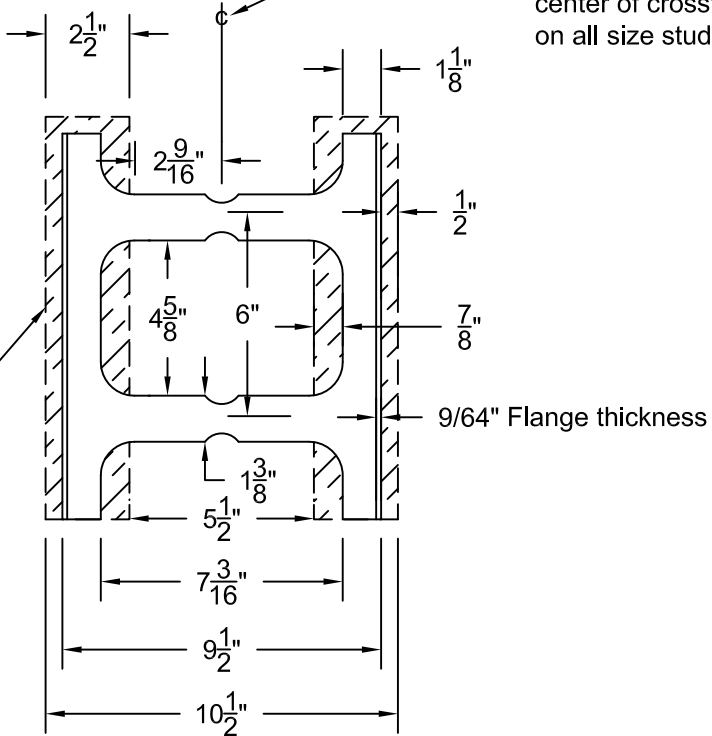


*** Note***
Rebar notch dimensions:
Notch dia. - 5/8"
Notch Depth - 1/4"

*** Note***
Rebar notch located in
center of crossies
on all size studs.

**6" PVC Studs
shown in
relationship to
poly panels.**

TF 2.5" Poly panel



4" & 6" PVC

Stud Dimensions

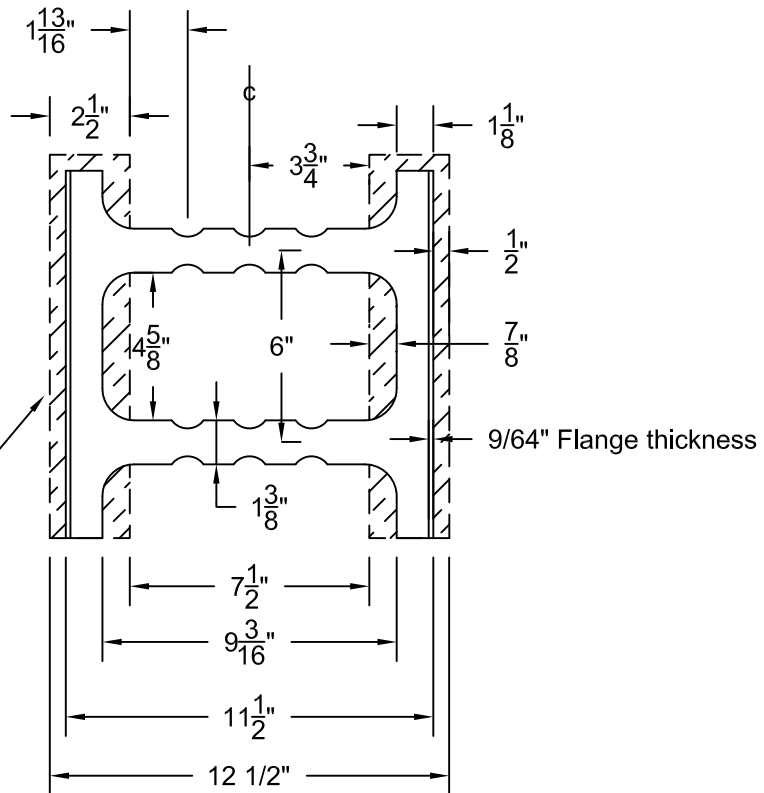
TF System®
3030C Holmgren Way
Green Bay, WI 54304 USA
800-360-4634

Revision Date:

Page Number: 65

**8" PVC Studs
shown in
relationship to
poly panels.**

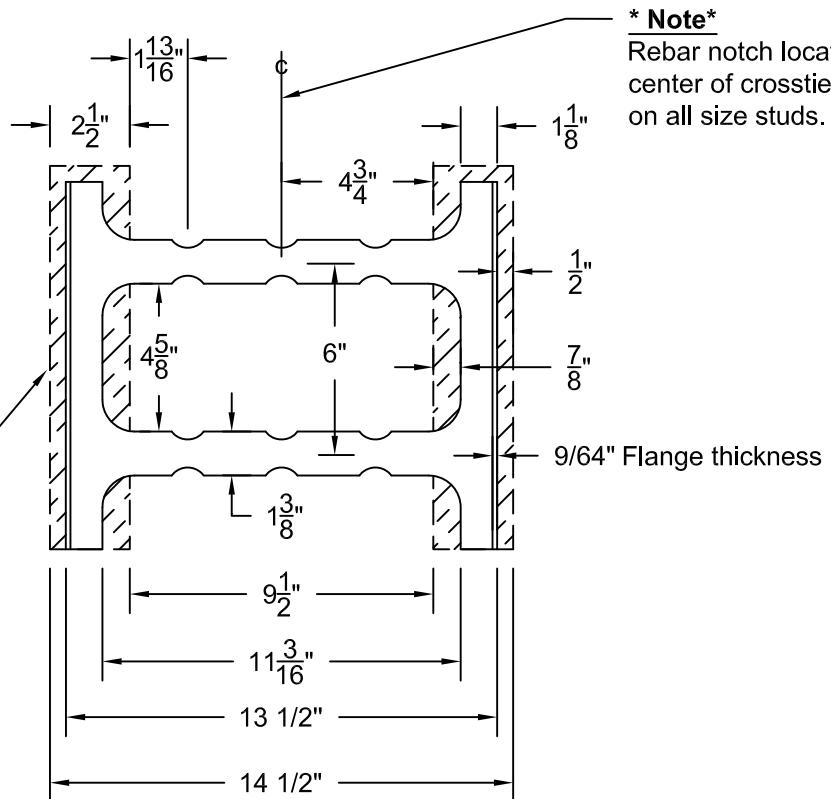
TF 2.5" Poly panel



*** Note***
Rebar notch dimensions:
Notch dia. - 5/8"
Notch Depth - 1/4"

**10" PVC Studs
shown in
relationship to
poly panels.**

TF 2.5" Poly panel



*** Note***
Rebar notch located in
center of crossies
on all size studs.



8" & 10" PVC

Stud Dimensions

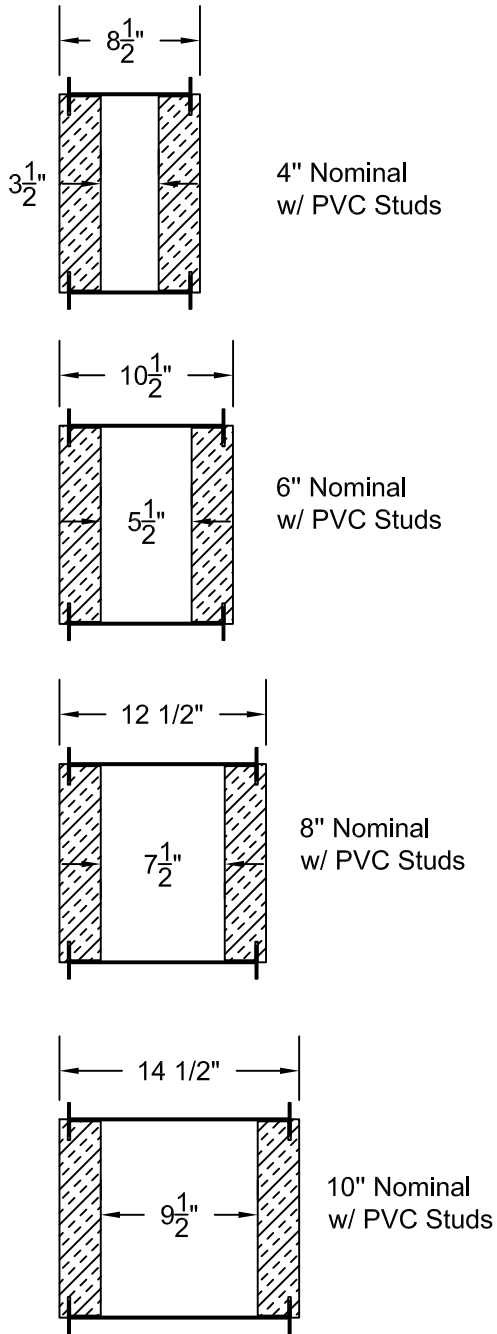
TF System®
3030C Holmgren Way
Green Bay, WI 54304 USA
800-360-4634

Revision Date:

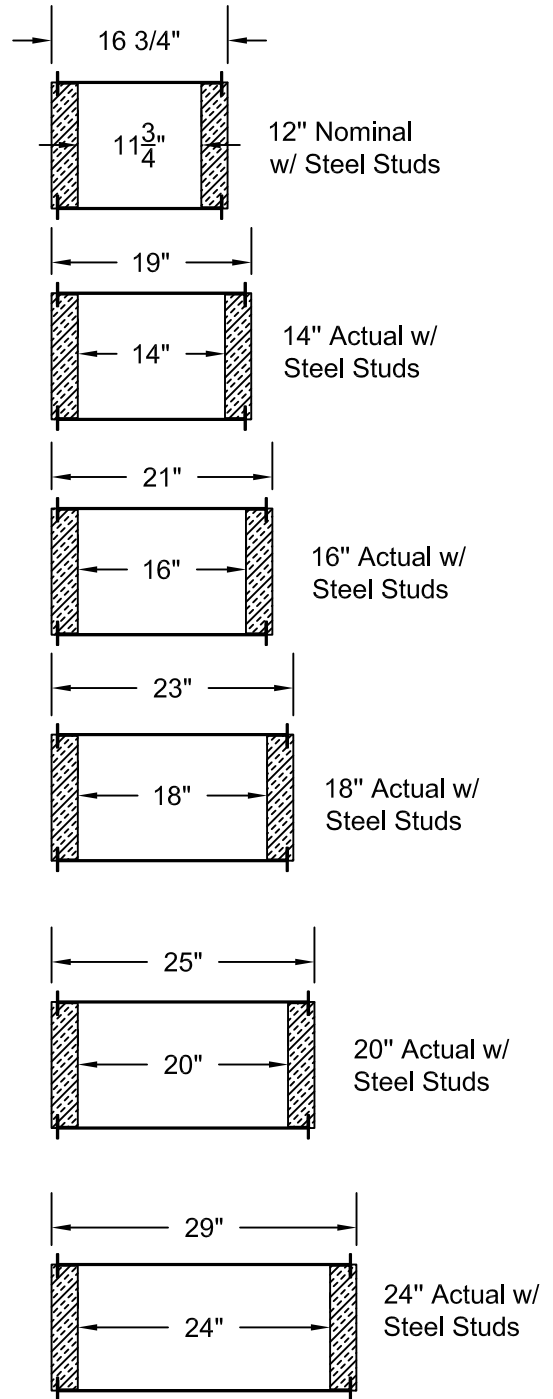
Page Number: 66

TF System® Wall Widths

Standard PVC System



Custom Steel System



System Dimensions

TF System®
3030C Holmgren Way
Green Bay, WI 54304 USA
800-360-4634

Revision Date:

Page Number: 67


Rigid PVC System Dimensions

Nominal Wall Width	Actual Cavity Width	Overall Wall Width
4"	$3 \frac{1}{2}"$	$8 \frac{1}{2}"$
6"	$5 \frac{1}{2}"$	$10 \frac{1}{2}"$
8"	$7 \frac{1}{2}"$	$12 \frac{1}{2}"$
10"	$9 \frac{1}{2}"$	$14 \frac{1}{2}"$

Steel System Dimensions

Wall Width	Actual Cavity Width	Overall Wall Width
(Nominal) 12"	$11 \frac{3}{4}"$	$16 \frac{3}{4}"$
(Actual) 14"	14"	19"
" 16"	16"	21"
" 18"	18"	23"
" 20"	20"	25"
" 24"	24"	29"

**TF System® will custom manufacture nominal wall widths in increments of 2" up to 24".
TF System® will also supply 3", 3.5", or 4" thick polystyrene panels if desired.**

	<h3>System Dimensions</h3>	TF System® 3030C Holmgren Way Green Bay, WI 54304 USA 800-360-4634
		Revision Date: 7/27/07 Page Number: 68

Dimensional Tolerance Specifications

Polystyrene Components

Poly Panel Height ¹	$\pm \frac{3}{16}$ "
Poly Panel Width ¹	$\pm \frac{1}{8}$ "
Poly Panel Thickness ¹	$\pm \frac{1}{8}$ "
Poly Corner Height ¹	$\pm \frac{3}{16}$ "
Poly Corner Leg Length ¹	$\pm \frac{3}{16}$ "
Poly Corner Thickness ¹	$\pm \frac{1}{8}$ "

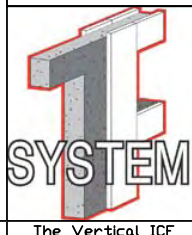
Steel & Plastic Components

C-Channel Length ³	± 1 " of ordered length
C-Channel Width ³	$\pm \frac{1}{8}$ "
PVC Stud Height ² & ³	$\frac{1}{2}$ " short of corresponding poly panel height $\pm \frac{1}{4}$ "
Steel Stud Height ² & ³	$\frac{1}{2}$ " short of corresponding poly panel height $\pm \frac{1}{4}$ "

¹ Like lumber Polystyrene may swell or shrink during the curing process.

² Studs are manufactured $\frac{1}{2}$ " short of ordered height, studs should be short of poly panels to allow easy rasping of the top of the poly panels.

³ All measurements taken should be "Hard Measured" with a non variable method or tool. (Tape Rules may vary)



System Overview

Product Tolerances

TF System®
3030 Holmgren Way
Green Bay, WI USA
800-360-4634

Revision Date:

Page Number: 69

TF System® Corner Set Dimensions

	Nominal System Width	Length of Outside Leg (a)	<p><i>* Note Specialty corner sets of any degree angle can be ordered.</i></p>
90° Corner Sets	4"	10"	<p style="text-align: center;">Groove dimensions are same size on all TF System components: Groove Width - 5/32" Groove Depth - 1 1/4"</p>
	6"	12"	
	8"	14"	
	10"	16"	
	12"	18"	
45° Corner Sets	4"	5 3/8"	
	6"	6 1/8"	
	8"	7"	
	10"	7 7/8"	
	12"	8 5/8"	



Corner Dimensions

90° and 45°

TF System®
3030C Holmgren Way
Green Bay, WI 54304 USA
800-360-4634

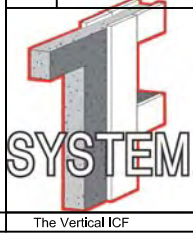
Revision Date: 7/27/07

Page Number: 70

TF System®

Inside I-beam Dimensions for Treated Window Bucks

	Nominal System Width	Width Between Flanges (b)	
			<p><i>* Note: Steel I-beams can be custom manufactured from 4" to 12" nominal widths and 14" to 24" actual widths in increments of 2". Steel I-beams can also be manufactured with offsets and other custom features.</i></p>
Steel I-beams	4"	7 ¹ / ₈ "	
	6"	9 ¹ / ₈ "	
	8"	11 ¹ / ₈ "	
	10"	13 ¹ / ₈ "	
	12"	15 ¹ / ₈ "	
Rigid PVC I-beams	4"	7"	
	6"	9"	
	8"	11"	
	10"	13"	



Inside I-beam Dimensions
for Treated window Bucks

TF System®
3030C Holmgren Way
Green Bay, WI 54304 USA
800-360-4634

Revision Date: 7/27/07
Page Number: 71

