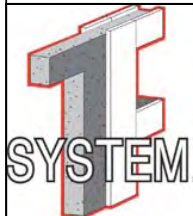
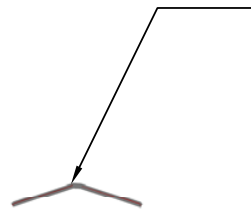


Section 8

Installing Rebar

Install corner rebar as the corner is set up.



Installing Corner Rebar

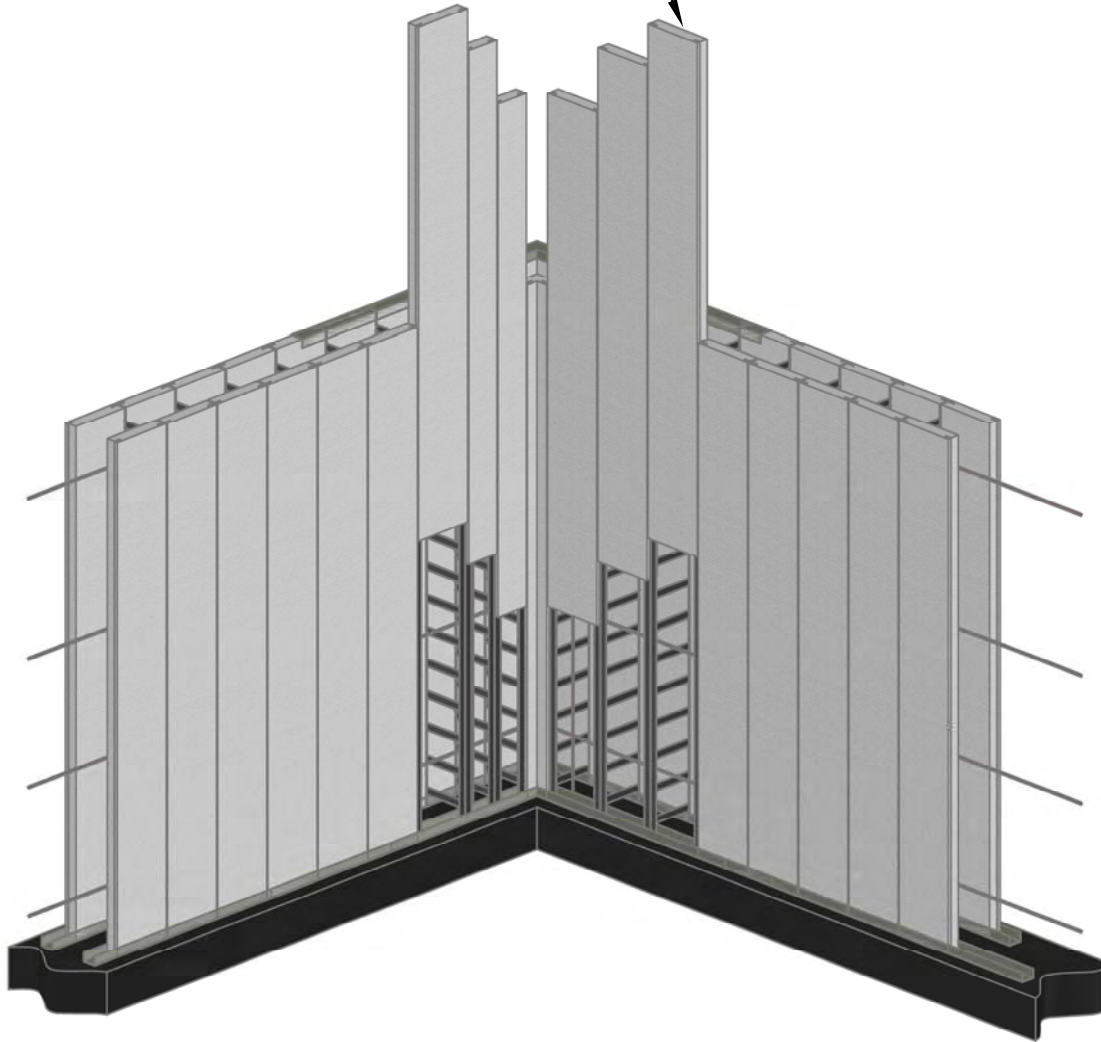
TF System®
3030C Holmgren Way
Green Bay, WI 54304 USA
800-360-4634

Revision Date: 7/27/07

Page Number: 85

This feature, unique to TF System®, allows access to the interior of the wall. This greatly facilitates tying rebar, inspection, recovery of dropped tools, and the removal of debris.

Poly panels can slide up to provide access to the interior of the wall.



Access to Interior

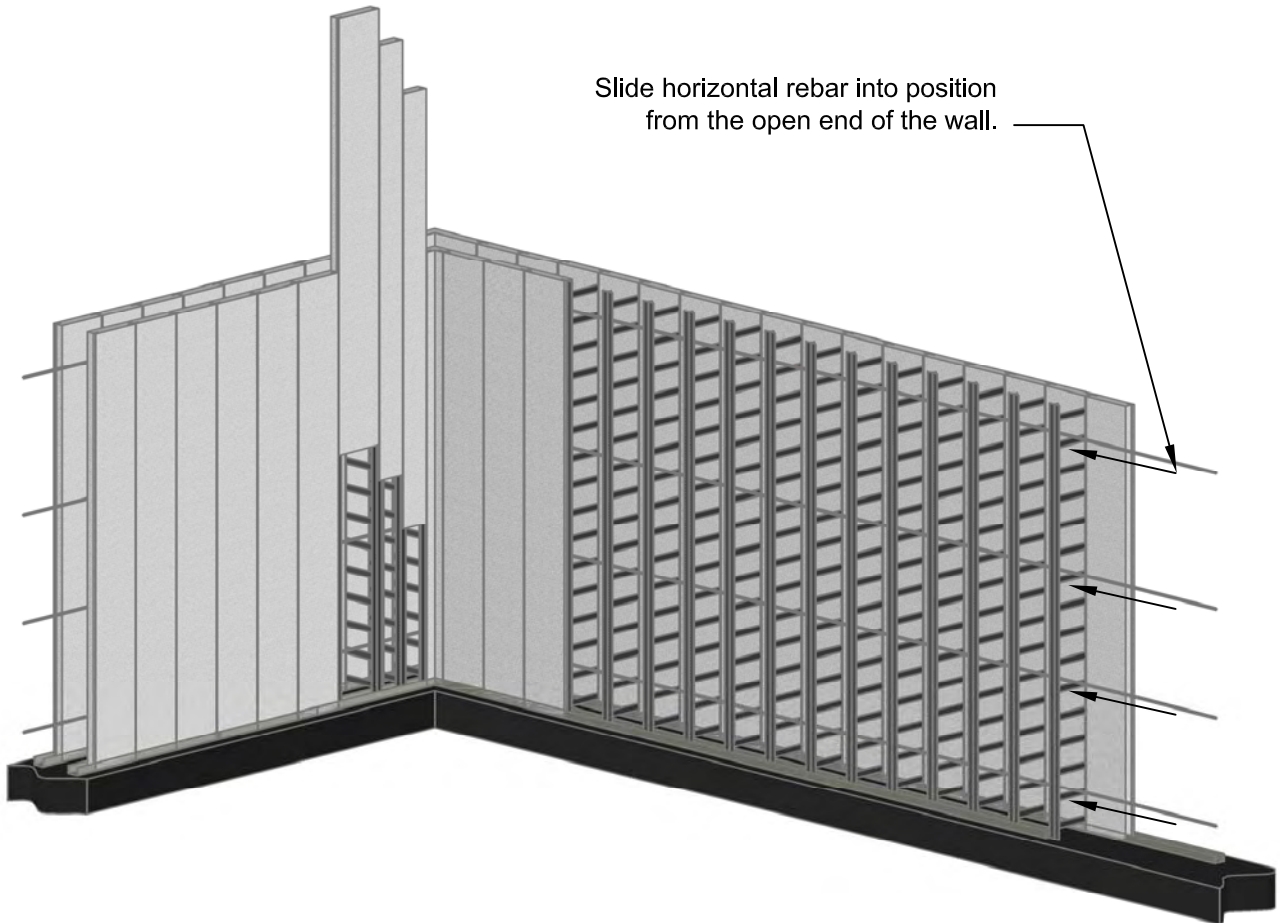
Sliding Panels Up and Down

TF System®
3030C Holmgren Way
Green Bay, WI 54304 USA
800-360-4634

Revision Date: 7/27/07

Page Number: 86

*** Interior poly panels may be left off to provide access to interior of the wall.**



* Vertical reinforcement can easily be installed at any time before the top c-channel is installed .



Open Wall Option

TF System®
3030C Holmgren Way
Green Bay, WI 54304 USA
800-360-4634

Revision Date: 7/27/07

Page Number: 87

